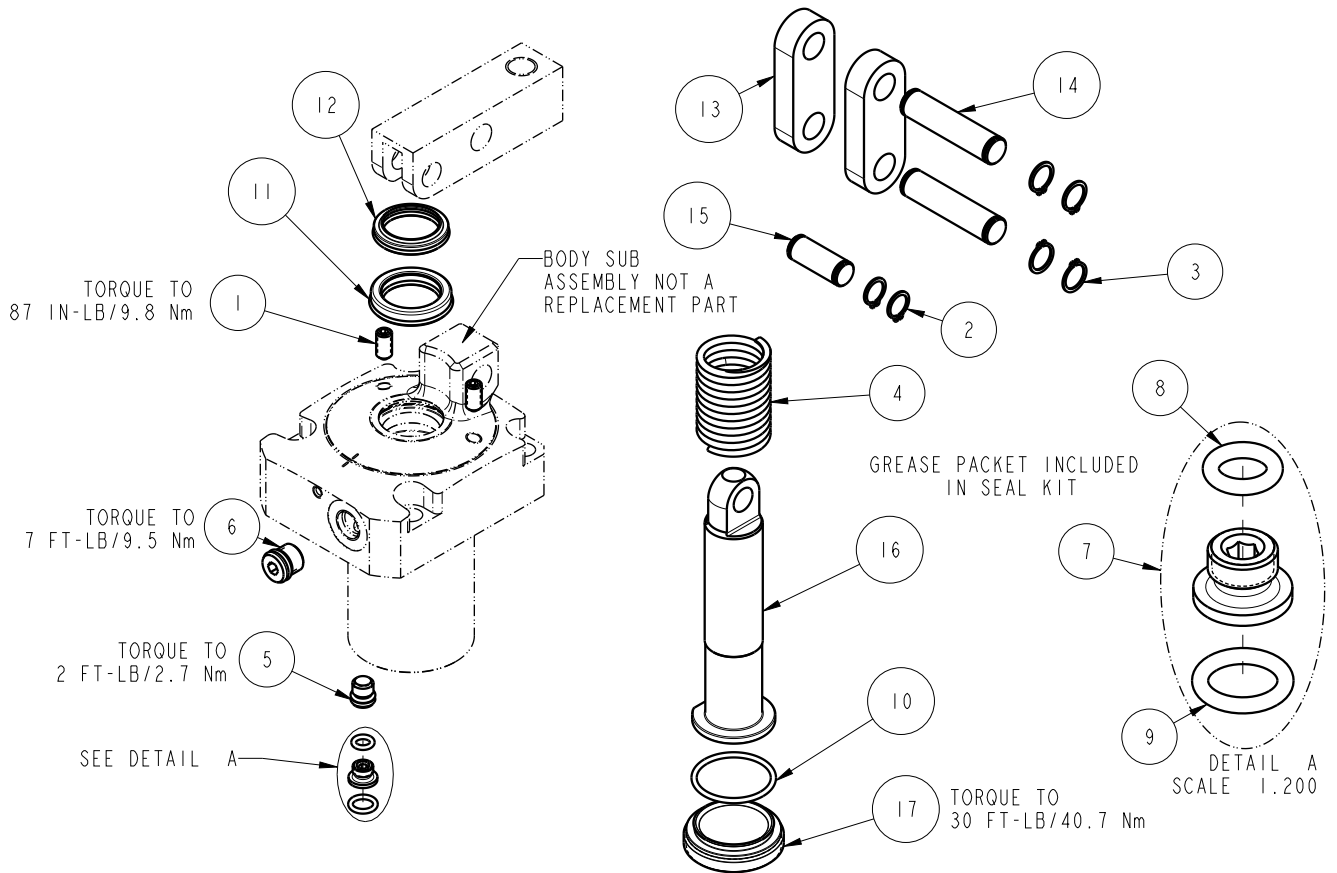


NO	QTY	PART NO	DESCRIPTION	STD SEAL KIT
1	2	21500319	SCREW, SET, CUP PT, M6 X 1 X 12	
2	2	23050036	RING, RTNG, EXT, 0.394	X
3	4	23050037	RING, RTNG, EXT, 0.438	X
4	1	23350131	SPRING, COMPRESSION	
5	1	30601122	PLUG, SOCH, SAE 2	
6	1	30601144	PLUG, SOCH, SAE 4	
7	1	30871120	ASSY, ADAPTER, SC, TF, MM	X
8	1	39050036	O-RING, (-009)	X*
9	1	39050042	O-RING, (-011)	X*
10	1	39051151	O-RING, (28mm X 2)	X
11	1	39052067	SEAL, ROD, RSB, 22, 85A, AU	X
12	1	39053043	SEAL, WIPER, SNAP IN, WED, 22, 94A, AU	X
13	2	81600148	LINK, LC, 7MPa, 50B	
14	2	81600153	PIN, LINK, LC, 7MPa, 50B	
15	1	81600158	PIN, PLUNGER, LC, 7MPa, 50B	
16	1	81600263	PLUNGER, LC, TL360, SA, 2400/10.4kN	
17	1	81600273	CAP, LC, TL360, 2400/10.4kN	
N/A	N/A	60160103	KIT, SEAL, ASSY, LC, TL360, SA, 24001b	NOTED

*NOTE: ITEMS INCLUDED IN NO. 7



PARTS LIST



VEKTEK, INC.
1334 E. SIXTH AVE. P.O. BOX 625
EMPORIA, KS. 66801 U.S.A.

ASSEMBLIES AFFECTED
16-3122-00

PARTS LIST, ASSY, LC, TL360, SA, 24001b

ROTARY LUG

SIZE
A PL1617

REV
C

C	5157	RELEASE	ALS	8/15/23
REV	IN ACCORDANCE WITH ECN	EFFECTIVE DATE	REVISED BY	DATE
DRW BY:	BCD	DRAWING STATUS: Released		
DATE:	07/20/16	PRODUCTION APPROVED FOR RELEASED STATUS ONLY		